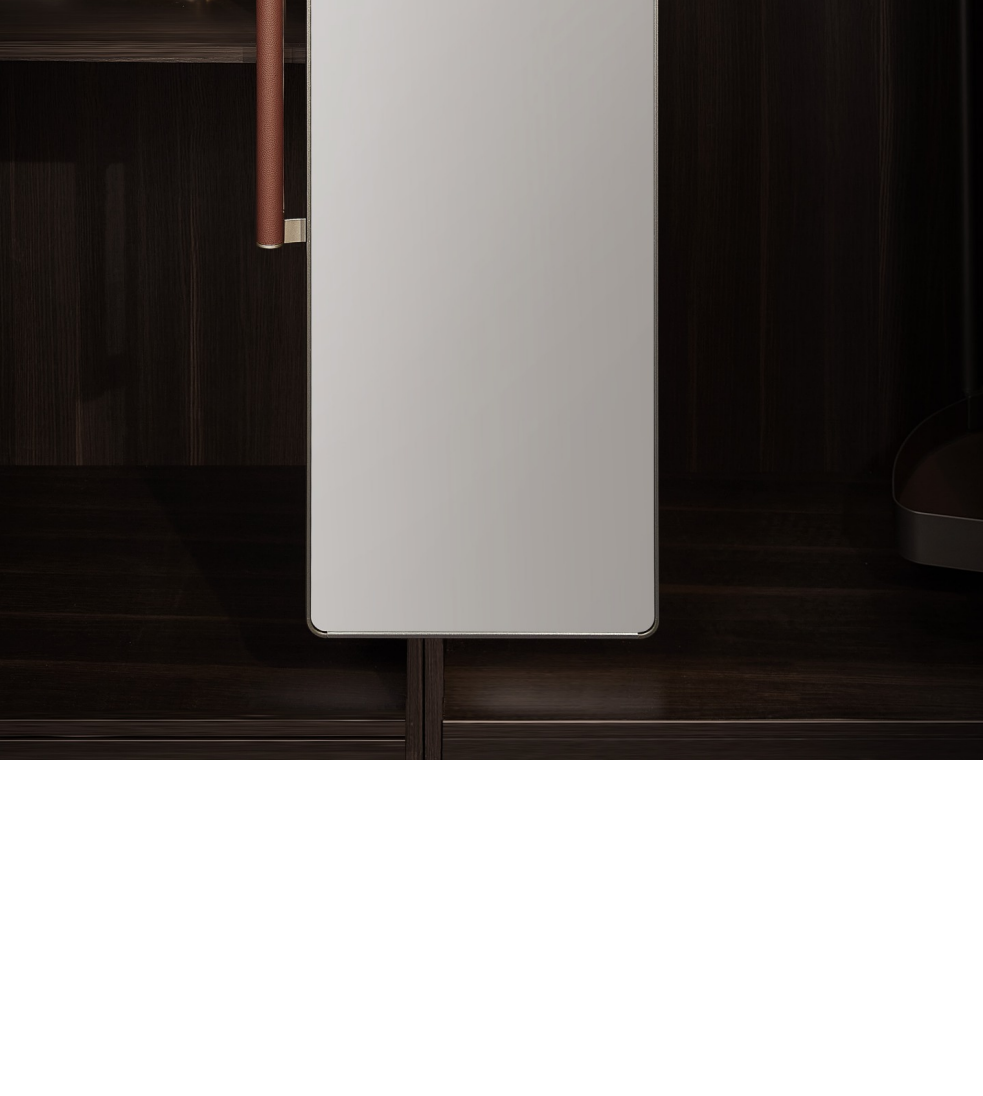


HIGOLD®

FULL LENGTH MIRROR

BV SERIES

Installation manual



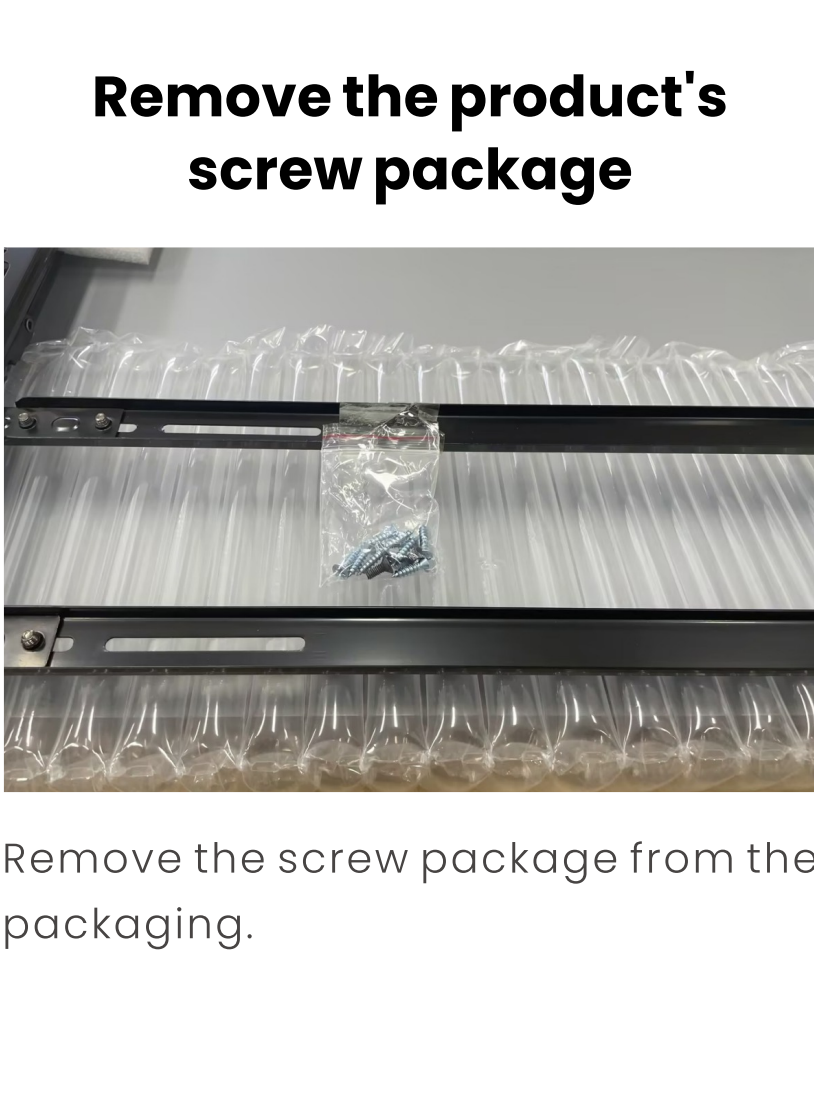
STEP - 01 -

Mark the points according to the height specified in the installation instructions

(Take the left cabinet as an example).



The instructions require marking points according to the height of the cabinet. The minimum distance from the lower guide rail to the bottom plate is 450mm, and the distance from the upper guide rail to the bottom plate is 1307mm.



Draw a horizontal reference line inside the cabinet at the pre-marked position corresponding to the height of the guide rail. Confirm the installation distance according to the instructions, which requires that the minimum distance from the cabinet edge to the guide rail is 60mm.

STEP - 02 -

Remove the product's screw package



Remove the screw package from the packaging.

STEP - 03 -

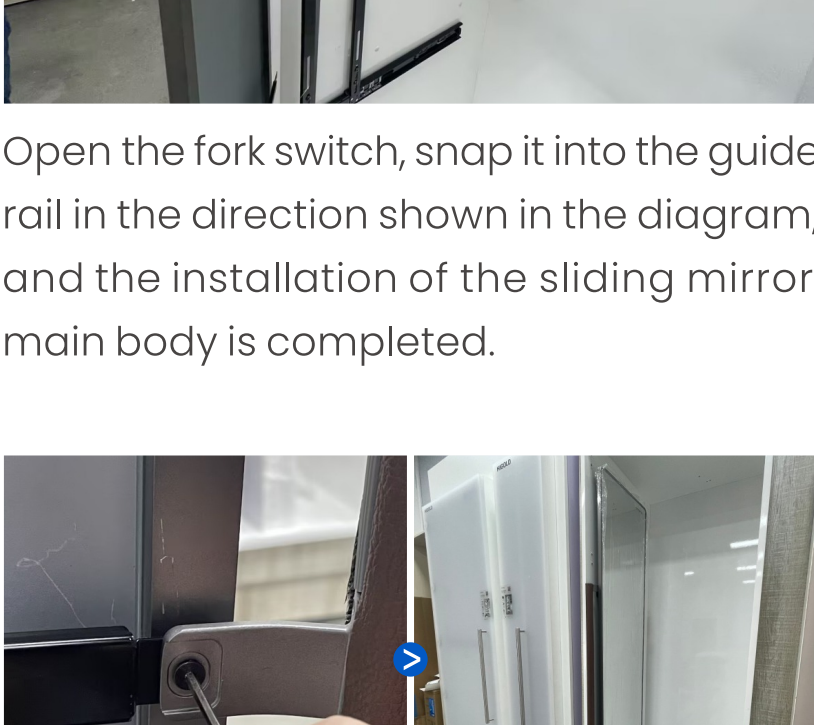
Separate the guide rail from the mirror



Push the fork switch horizontally to separate the upper and lower guide rails.

STEP - 04 -

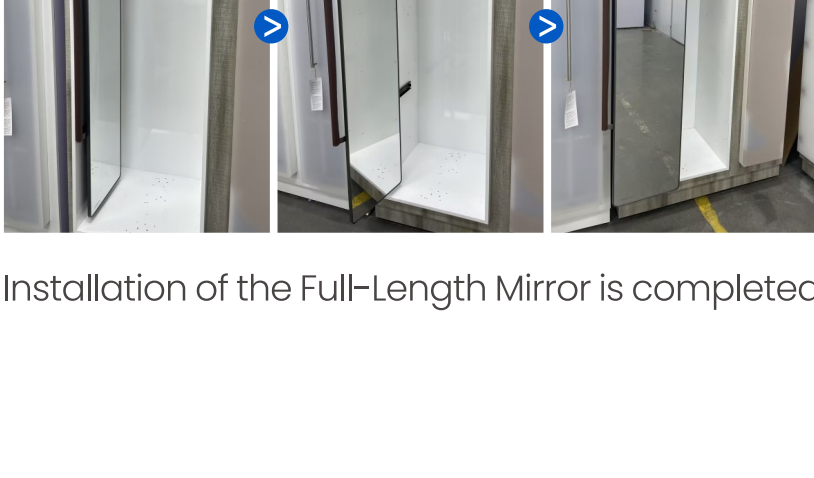
Installation of the guide rail



Place the guide rails according to the margins, tighten the self-tapping screws along the horizontal line, and the installation of the upper and lower guide rails is completed.

STEP - 05 -

Installation of the mirror



Open the fork switch, snap it into the guide rail in the direction shown in the diagram, and the installation of the sliding mirror main body is completed.



Tighten the mirror handle with a hex wrench and peel off the film.

STEP - 06 -

Installation of the Full-Length Mirror is completed

Installation of the Full-Length Mirror is completed.

HIGOLD®

Original Design & Quality

